



# Rover Coin

Rover Basic Masternode Setup Guide - Windows

2018.03.07



# Contents

- 1. Windows wallet guide..... 3
  - 1.1 Download the latest Rover windows wallet..... 3
  - 1.2 How to make your own Rover address..... 3
    - (Optional) How to reveal specific amount of coin for each address & Masternode tab..... 3
  - 1.3 How to send Rover..... 4
  - 1.4 Encrypting Windows wallet..... 4
- 2. Masternode setup guide..... 4
  - 2.1 Make new address for Masternode..... 5
  - 2.2 Send exactly '10000ROE' to address which is made in step 2.1..... 5
  - 2.3 Get privkey, TxHash and Output index..... 5
  - 2.4 Setup RPC details..... 6
  - 2.5 Setup the Masternode at windows wallet..... 7



# 1. Windows wallet guide

## - 1.1 Download the latest Rover Windows wallet

<https://github.com/RoverCoin/Rovercoin/files/1789416/Rover-QT-.Windows.zip>

## - 1.2 How to make your own Rover address

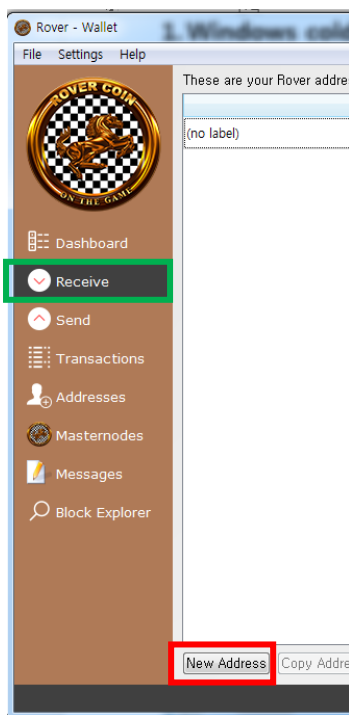


Figure 1

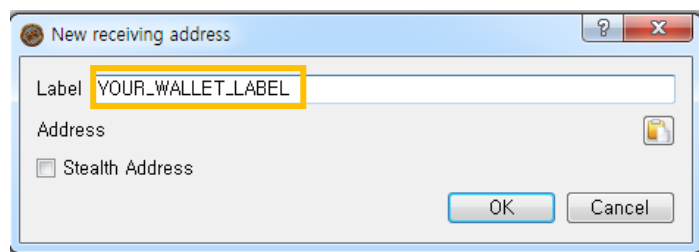


Figure 2

- a) Click the 'Receive' tab (fig 1, green box)
- b) Click the 'New Address' tab (fig 1, red box)
  - ▶ Pop-up window (fig 2) will show up
- c) Type in your wallet label and click 'OK' (fig 2, orange box)
- d) Now your new wallet address has created
  - ▶ You can copy address by clicking 'Copy Address' tab

### (Optional) How to reveal specific amount of coin for each address

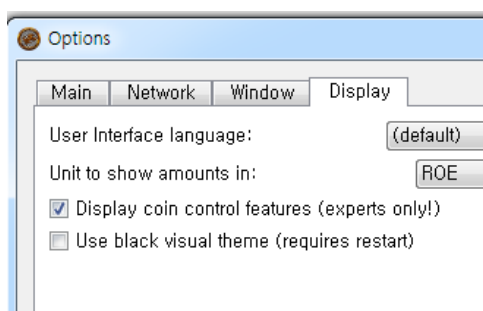


Figure 3

Go to Settings → Options → Display

- a) Check 'Display coin control features'
  - ▶ Coin amount will be displayed at 'Send' tab → Inputs



### - 1.3 How to send Rover

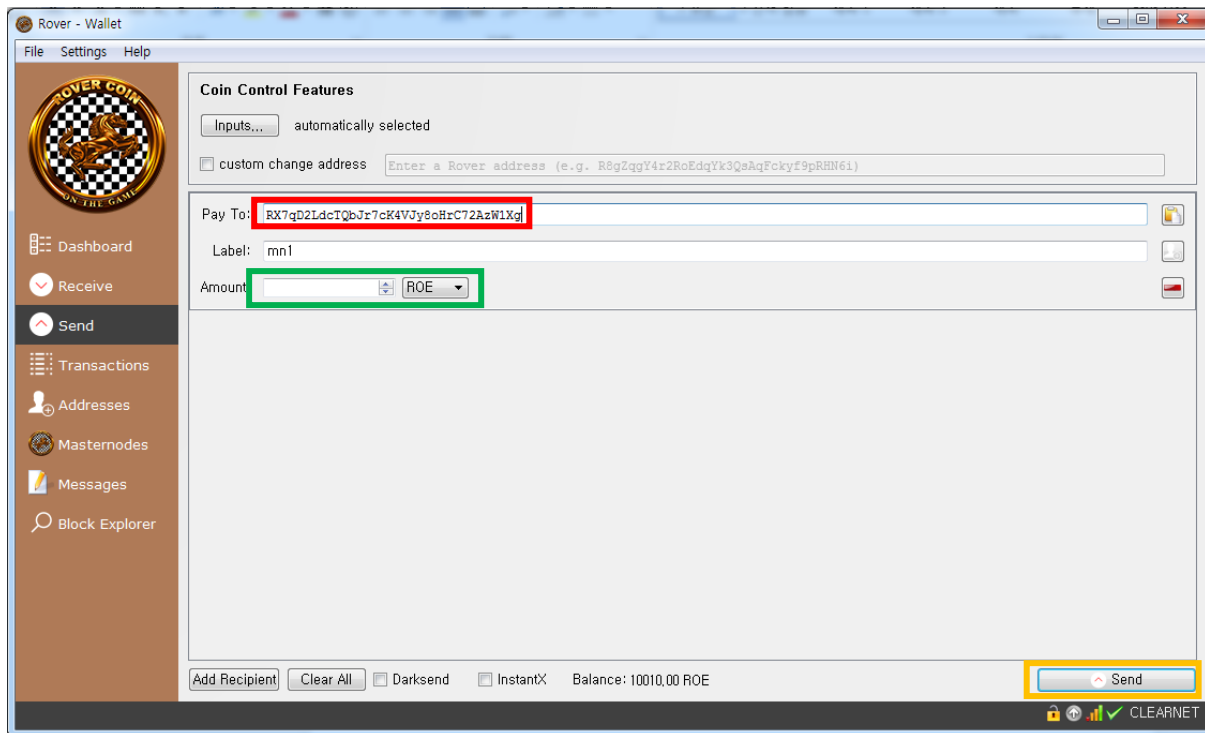
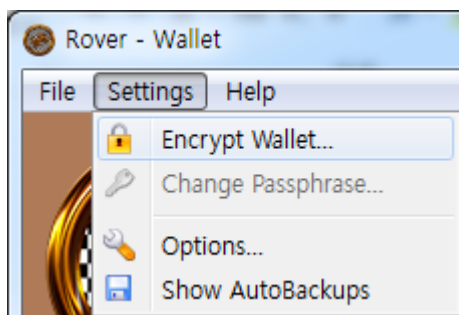


Figure 4

- a) Click 'Send' tab
- b) Type in Receiver's address in 'Pay To' (red box)
- c) Type in amount of HTK to send (green box)
- d) Click 'Send' (orange box)

### - 1.4 Encrypting Windows wallet



Go to Settings → Encrypt Wallet → Insert password twice  
(Reminder: Never forget or lose your password!)

Figure 5



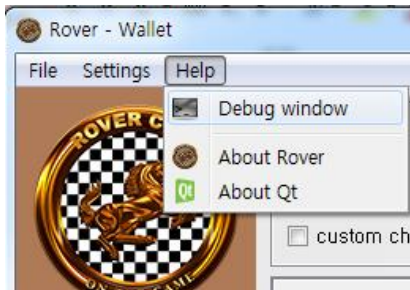
## 2. Masternode setup guide

- 2.1 Make new address for Masternode (Refer to step 1.2 for guidance)

- 2.2 Send exactly '1000ROE' to address which is made in step 2.1 (Refer to step 1.3 for guidance)

▶ It will automatically include fee, so you just need to type 10000 at 'Amount'

- 2.3 Get privkey, TxHash and Output index



Go to Help → Debug window

a) Type in 'masternode genkey', (copy & paste the result in notepad)

```
▶ masternode genkey
69Nw7ydMgqz8ko <vLFEwEocB
```

b) Type in 'masternode outputs', (copy & paste the result in notepad)

▶ Result shows "TxHash" : "Output index"

Figure 6

```
▶ masternode outputs
{
  "357d8718b121613... 305b2b14104a4" : "1"
}
```

Error: If you get a result like this, it means that there are no wallets containing 1000HTK

```
▶ masternode outputs
{
}
```



## - 2.4 Setup RPC details

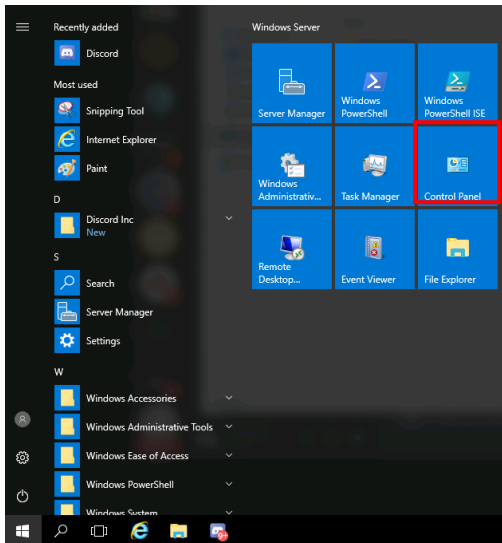


Figure 7

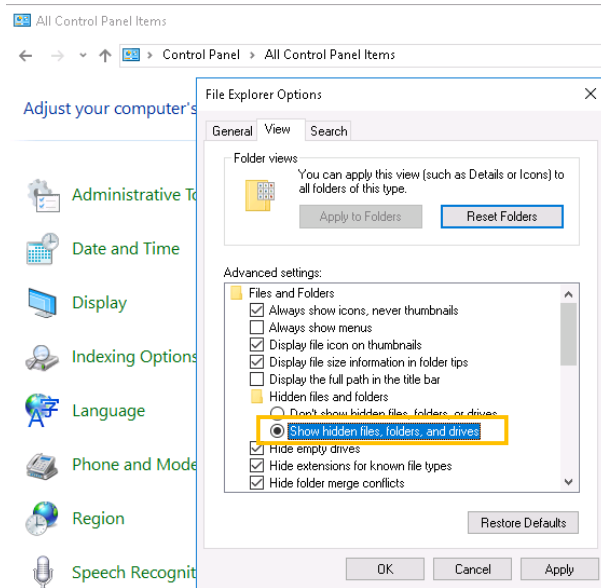


Figure 8

- a) Open 'Control Panel' (fig 7, red box)
- b) Click 'File Explorer Options' → 'View' tab
  - ▶ Check 'Show hidden files, folders, and drivers' (fig 8, orange box)
- c) Go to 'Local disk (C:)' → 'Users' → 'YOURUSERNAME' → 'AppData' → 'Roaming' → 'Rover'
  - ▶ Open 'Rover.conf' and type the following and save (Open with notepad program)

```
rpcuser=RANDOMWORD
rpcpassword=RANDOMWORD(HAVE TO DIFFERENT WITH rpcuser's VALUE)
rpcallowip=127.0.0.1
rpcport=28217
port=28218
listen=1
server=1
daemon=1
bind=SERVERIP
masternode=1
externalip=SERVERIP:28218
masternodeprivkey=PRIVATE KEY(refer 2.3 (a), privkey)
```



## - 2.5 Setup the Masternode at Windows wallet

### a) Create Masternode

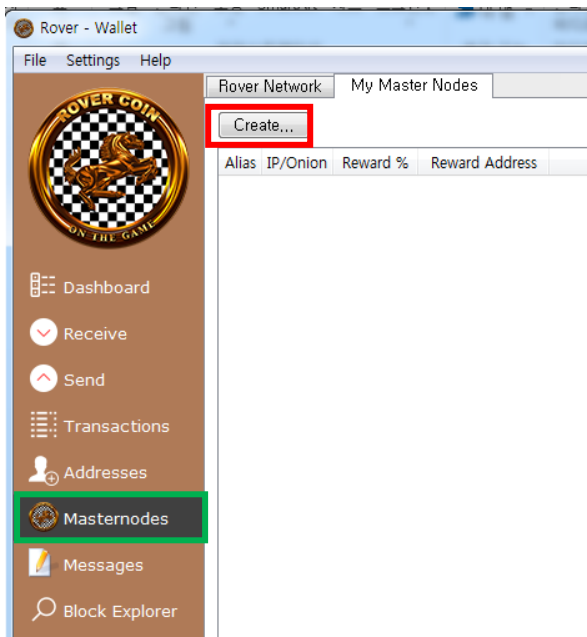


Figure 12

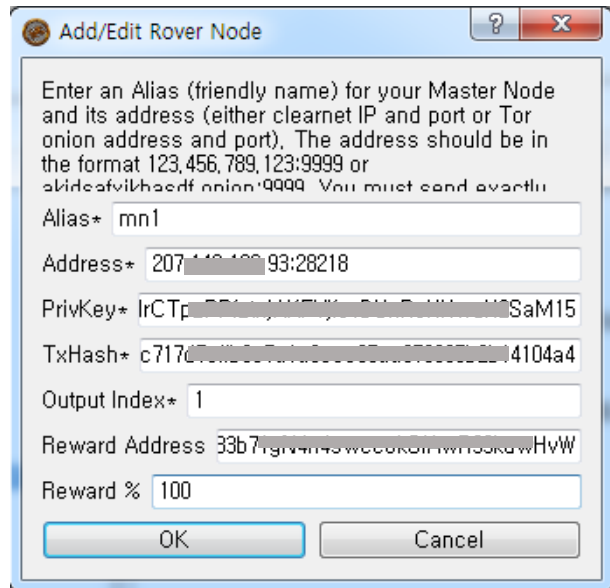


Figure 13

a) Click 'Masternodes' tab (fig12, green box)

b) Click 'Create' tab (fig 12, red box)

► Pop-up window(fig 13) will show up

c) Type in the boxes and click 'OK' (red part should be changed to your own values)

Alias : <b>YOUR_MN_NAME</b>
Address : <b>YOUR_IP:28218</b>
PrivKey : <b>PRIVATE KEY</b> (refer 2.3 (a), privkey)
TxHash : <b>TxHash</b> (refer 2.3 (b), TxHash)
Output Index : <b>0 or 1</b> (refer 2.3 (b) Output Index)
Reward Address : <b>Masternode address</b> (refer step 2.1)
Reward % : 100



e) Click your Masternode and click 'Start' button below (Unlock the wallet first, if it's encrypted)

► Once you see the following pop-up window, Masternode setup is finished!

